

[Fair info](#) | [Fair Details](#) | [Registration](#) | [Trade Buyer ID](#)

SEASONS | Spring: Fresh and bold

A colour palette that is awash in earthy tones, reds and blues; flamboyant forms and rich textures, and classics revisited and reinvented are some of the fashion jewellery and accessories themes that will leave their marks on [Seasons | Spring](#) in March in Hong Kong. Among the highlights of this important sourcing event are fresh updates to classic accessories such as the ever-popular raffia bag, beaded clutch purse, and scarf and stole.

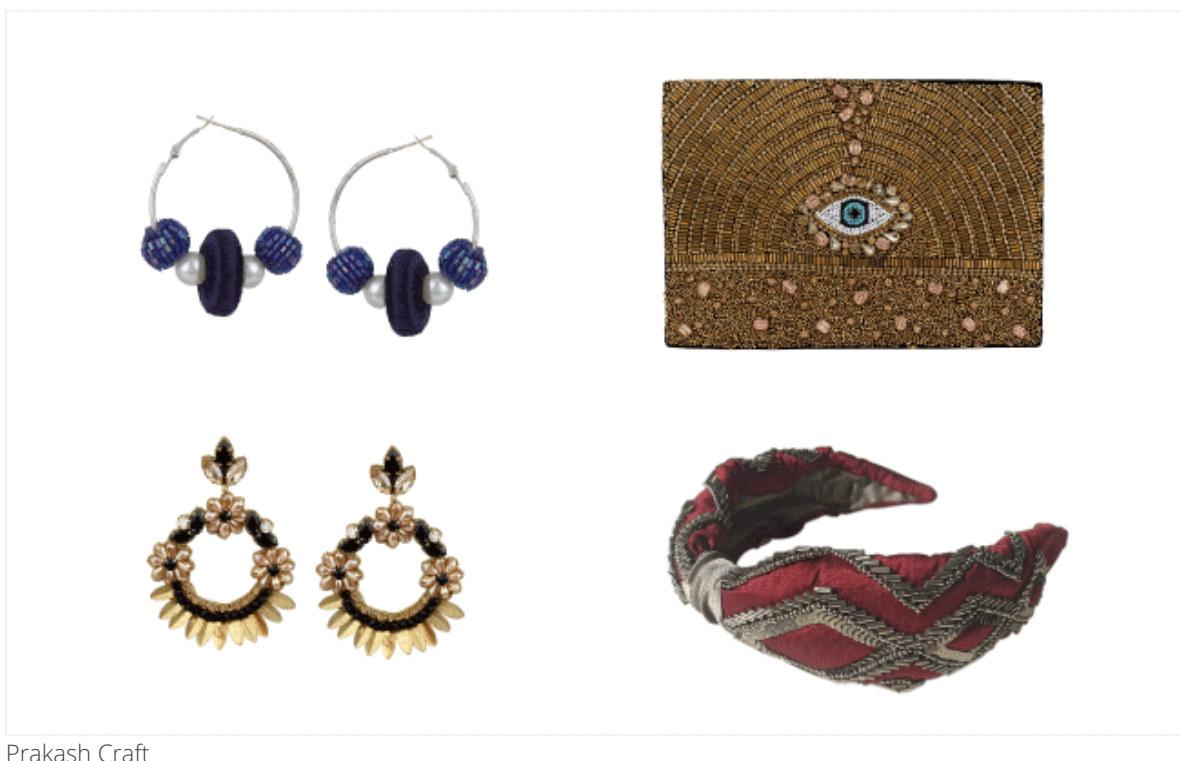
Scheduled for March 3 to 6 in Halls 3 and 6 of the AsiaWorld-Expo (AWE), [SEASONS | Spring - Fashion Jewellery & Accessories Fair](#) will feature primary suppliers of thousands of top-selling collections and unique pieces handcrafted by artisans across the region.

[Plan your visit](#) now to discover the fashion jewellery and accessory staples that are wonderfully diverse for Fall/Winter 2020-2021!

Exhibit Preview



Dre An Co Ltd

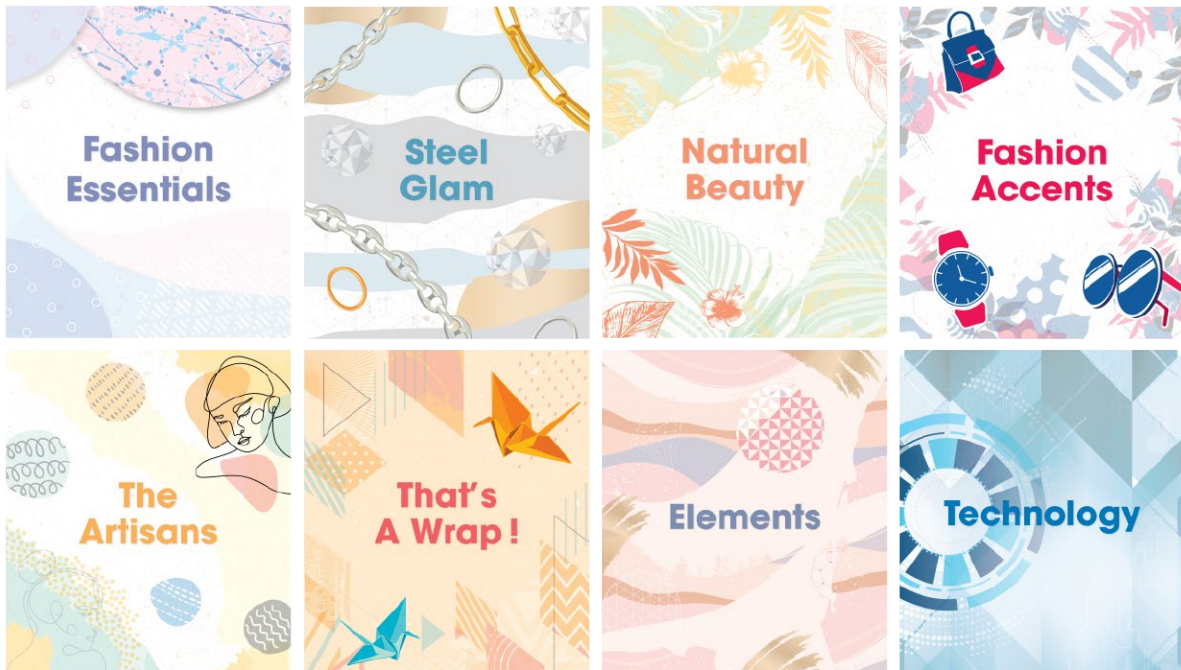


Prakash Craft

[Read More](#)

Fair Highlights

✔ [Eight Product-themed Pavilions](#)



✔ [Networking Hub](#)

Tap into trends direction, market updates, visual merchandising tips and technology innovation from a series of expert seminars

✔ [Onsite Experiences](#)

Lifestyle Crossover, Young Talents Showcase and more for rich and inspiring experiences

✔ [Small-order Gallery](#)

An anchor showcase puts the spotlight on products that are available for purchase in smaller quantities

Preferred Official Partner: Regal Hotels



Regal Hotels currently owns and manages 25 hotels and over 10,000 rooms and 90 restaurants and bars. Regal Hotels and iclub Hotels are strategically located in city centres or close to major transportation hubs with easy travel to other areas in the city. The hotels are accompanied by local and valuable attractions that help guests planning any community tour or local programmes at ease. It will be a good choice for both business and leisure travellers.

As the "Preferred Official Partner", Regal Hotels is offering special rate for SEASONS | Spring - Fashion Jewellery & Accessories Fair 2020's participants.

[Click here for details](#)

Recommended Online Hotel Booking Service

HOTELMAP

We highly recommend you to plan your trip to Hong Kong with our hotel partner HotelMap. HotelMap offers a wide range of accommodation options at special rates and charges. [Click here](#) to check for the latest special room rates and make your reservations now.

Alternatively, if you need assistance with your hotel booking, you may contact Jessica Heili, our dedicated concierge. Send your requirements, phone number and Special Reference Code MYGPL to jessica_heili@hotelmap.com, and Jessica will get back to you to discuss your hotel options.

Fair Details

Fair Dates	Opening Hours
3 - 5. 3. 2020	1000 - 1800
6. 3. 2020	1000 - 1700

*Registration counters will be closed 30 minutes before the fair ends daily. For trade buyers aged 18 or above.

Venue: Halls 3 & 6, AsiaWorld-Expo, Hong Kong International Airport, Lantau Island, Hong Kong

Contact

Visiting

T +852 2516 2192

E visita-f-hk@informa.com



This message is sent to you by Informa Markets. We may irregularly provide you with further information or promotional materials to update our fairs, magazines, products and services by email. We will cease to use your personal data for direct marketing purposes without any charge to you if you so request. If you do not want to receive information of this nature, please [click here](#) to manage your subscription.